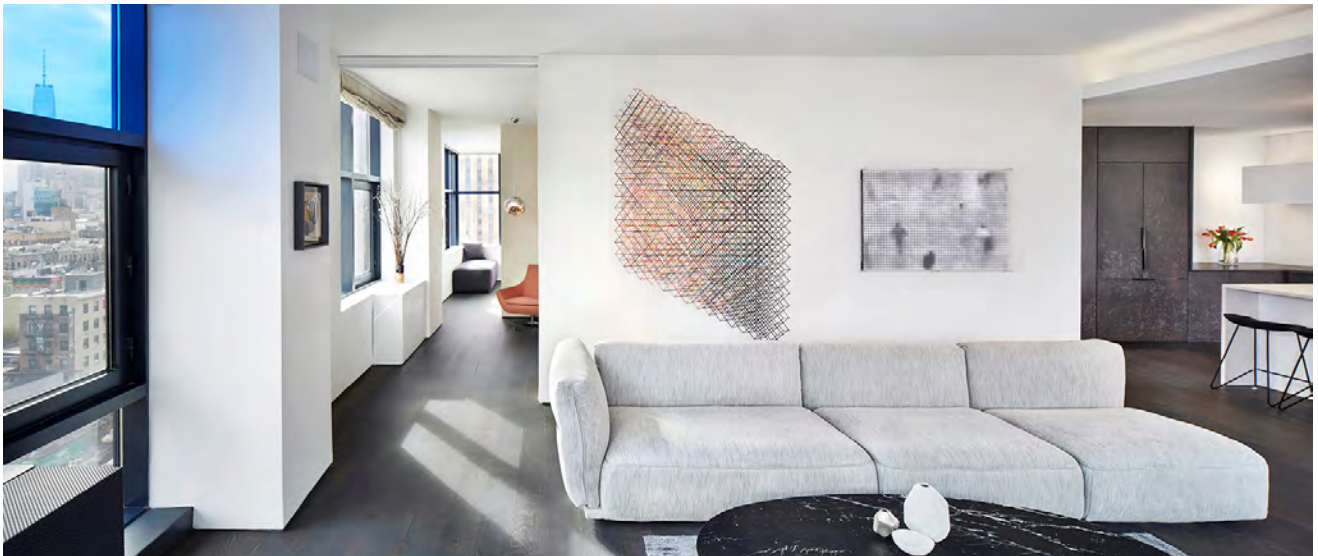


# CDR

## NORFOLK BLUES: INTERIOR RENOVATION



Setting the main living spaces along the existing building's sloped southern walls allows for panoramic views across the apartment and to the Williamsburg Bridge. The "fireplace" sits at the center of the floor plate, and the entry's plywood screen shelters yet filters the space beyond.



At the living room's open corner, the interior room dividers pull away from the perimeter wall to provide a more open and fluid living space, accentuating the views across the city.

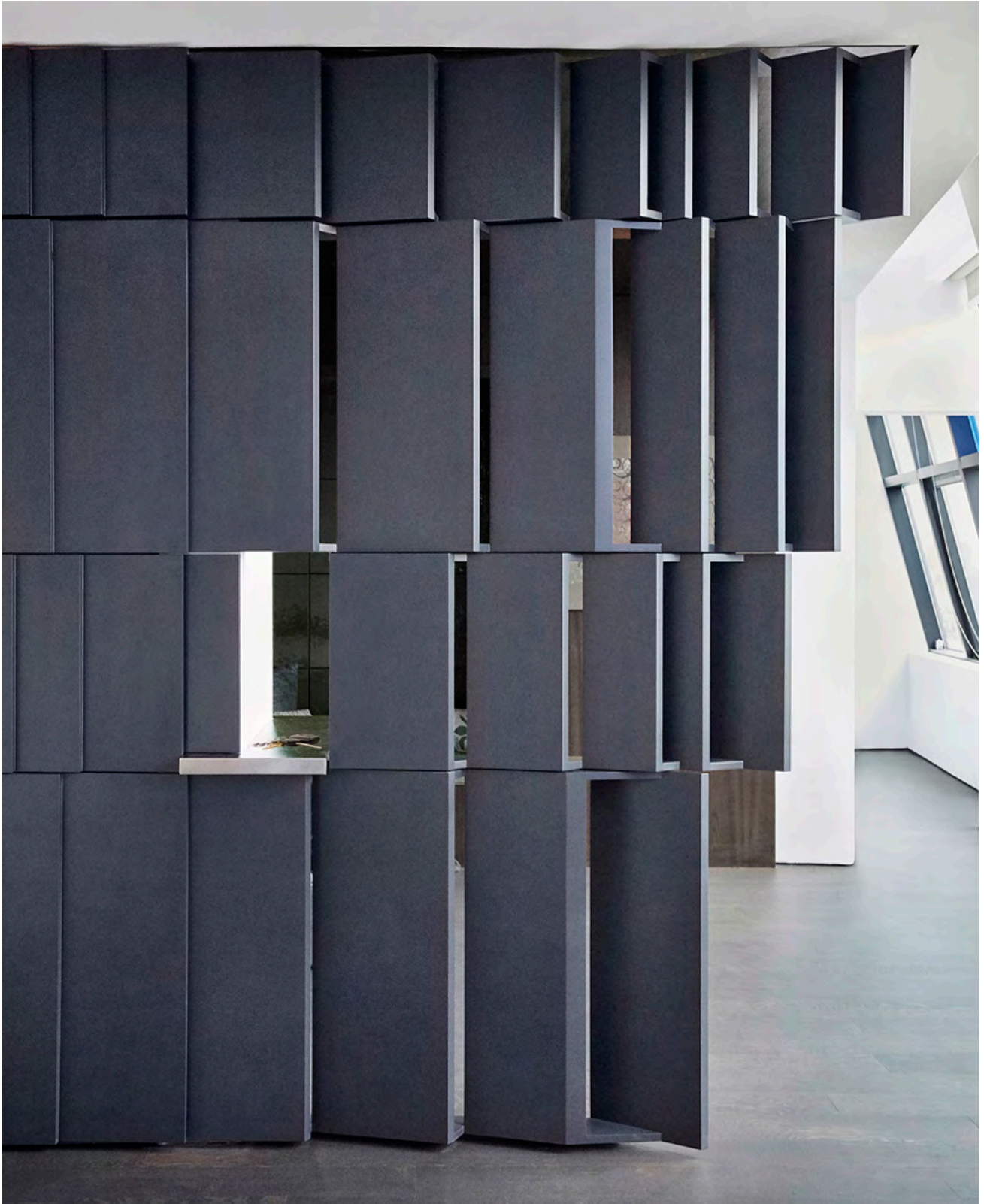


The “fireplace” is rooted to the kitchen island, a sculptural form that reaches up vertically, branching out to tie together a complex landscape of existing ceiling conditions.



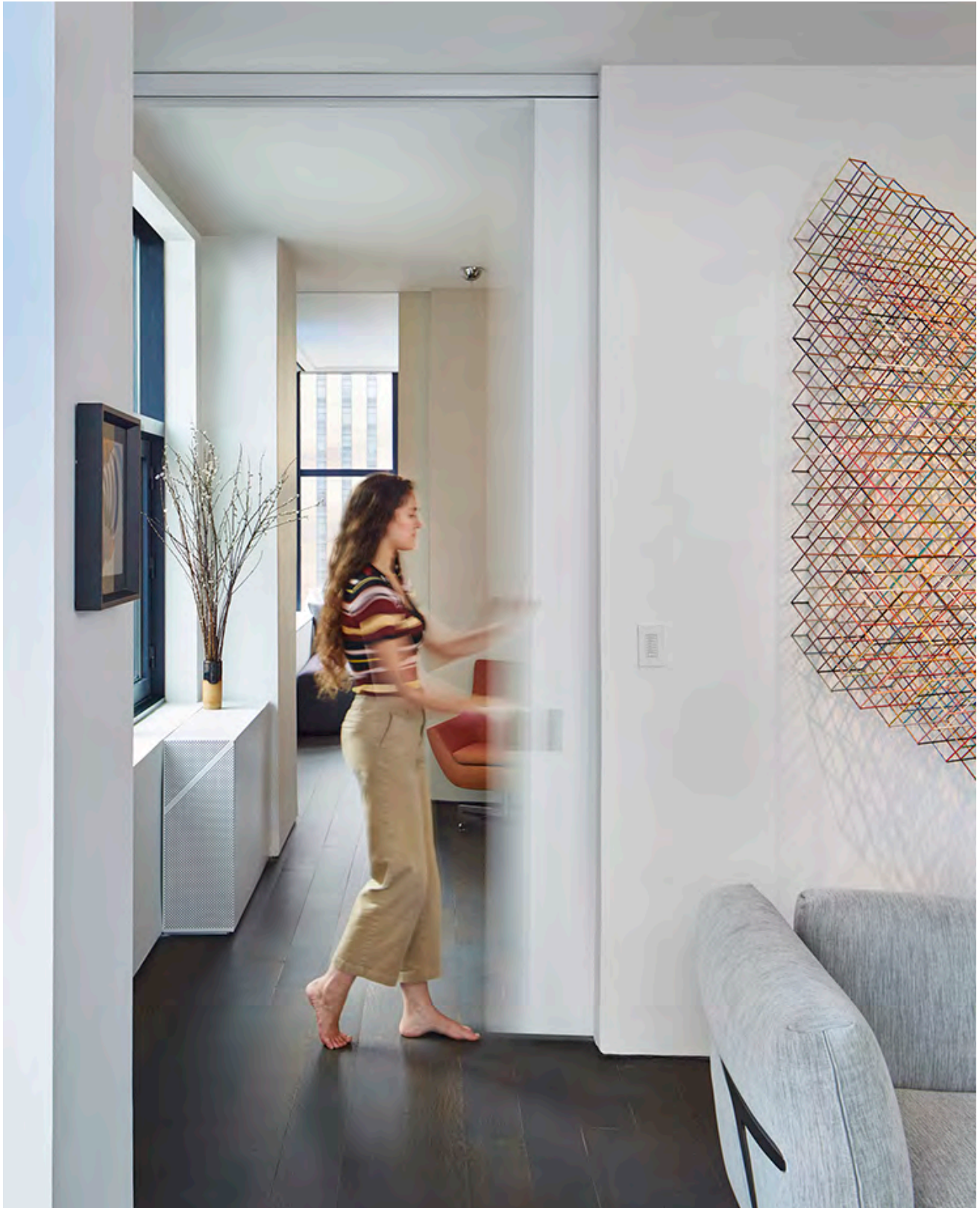


The plywood screen defines the entry and rotates parametrically from one side to the other, defining the bar-lounge but allowing for a continuous living space along the building perimeter.

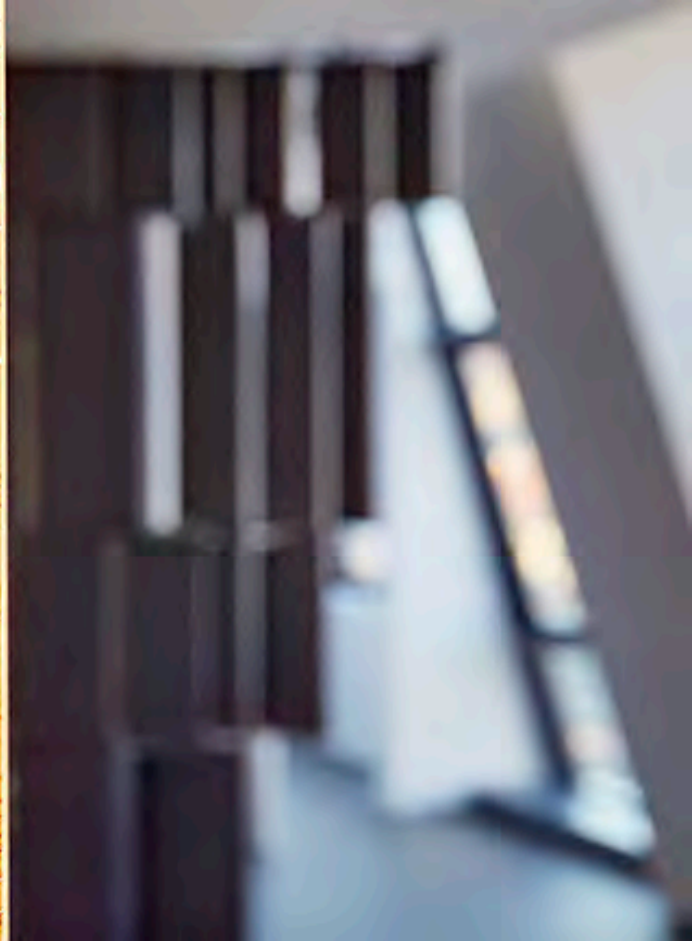
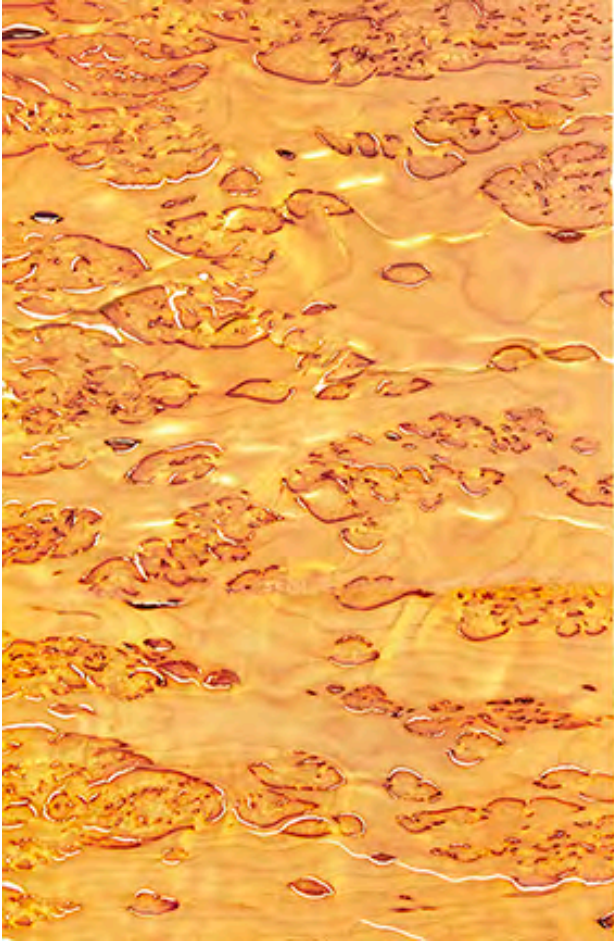


Detail of the custom, high-lacquered-finished, CNC-milled charcoal screen wall, which acts as both an entry point and a curtain tying the surfaces of the floor and millwork together.





Sliding walls along the perimeter allow for privacy between the living room, den and master bedroom... allowing one to reveal or conceal the rooms and views beyond.



Detail of the LED-light "hearth" or "fireplace," with the entry screen beyond; these planes of light and transparency create points of rest and texture within the simple interior.





Detail of the charcoal-colored MDF kitchen millwork, textured through CNC routing, mimics the texture and warmth of the fireplace. The screen, cabinets and floor frame the white interior walls that display the owner's art collection.